

Úlohy zadané žiakom počas samoštúdia 18.1. – 22.1.2021

Anglický jazyk

5.ročník

Nová slovná zásoba – prepísať – učebnica str. 32

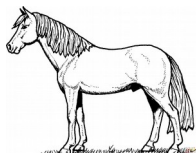
Have you got a pet? – Máš domáce zvieratko?

| | | |
|---------|--------|---------|
| HAMSTER | hamstr | ŠKREČOK |
| RABBIT | rabit | ZAJAC |
| RAT | ra:t | POTKAN |
| SNAKE | snejk | HAD |
| HORSE | ho:rs | KôŇ |
| MOUSE | maus | MYŠ |
| FISH | fiš | RYBA |
| SPIDER | spajdr | PAVÚK |
| BUDGIE | badži | ANDULKA |
| PARROT | part | PAPAGÁJ |

Úlohy na vypracovanie :



1.



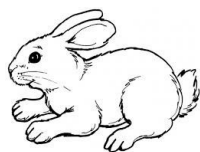
2.



3.



4.



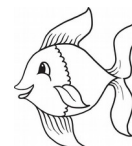
5.



6.



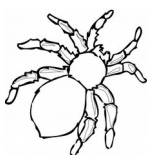
7.



8.



9.



10.



11.



12.

2. Prelož

- | | |
|------------------------|-----------------------------|
| 1. hnedý kôň -..... | 5. veľký potkan - |
| 2. čierny pavúk -..... | 6. veľký čierny pes - |
| 3. päť škrečkov -..... | 7. dlhý had - |
| 4. biela mačka -..... | 8. 2 malé zajace - |

3. Zakrúžkuj **správne NAPÍSANÉ** slová

| | | | | |
|---------|---------|---------|------------|-----------------|
| RABBIT | SPAIDER | BUDGIE | MP3 PLAYER | GRENDMOTHE R |
| COMPUTR | PRESNT | HAMSTER | CAMERA | WENDESDA Y |
| FAMYLII | | | | |
| HORSE | | | | |
| SNAKE | BAIK | UNCLE | UMBRELLA | PICTUR |
| | | | EXERSISE | |

Sloveso MAŤ – Otázka, odpoveď

Otázku tvoríme nasledovne :

HAVE / HAS + **OSOBA** + **GOT** + predmet ...?

HAVE – I, You, We, They HAS – He, She, It

Have you got a car? Máš ty auto?

Odpoveď : **kladná** – **YES**, osoba + have/has got....

Záporná – **NO**, osoba + haven't / hasn't got

Has she got a pet? Má ona domáce zvieratko?

Yes, she has got a pet. - Áno, ona má....

No, she hasn't got a pet. - Nie, ona nemá....

Úlohy na precvičenie :

1. Doplň HAVE / HAS GOT

- | | |
|---------------------------|----------------------------------|
| 1. she got a pen? | 2. you got a brother? |
| 3. we got a teacher? | 4. they got a mobile phone? |
| 5. Peter got a bike? | 6. Anna got a radio? |

2. Prelož vety do angličtiny

1. Tom má pavúka.
2. My máme andulku.
3. Máte vy počítač?
4. Nie, my nemáme počítač.
5. Máš ty koňa?
6. Sue nemá čiernu mačku.

3. Spoj stĺpec A so správnou odpoveďou v stĺpci B: všímajte si osoby ☺

| A | B |
|-----------------------|-----------------|
| Have you got a dog? | No, she hasn't. |
| Has she got a flower? | Yes, we have. |
| Have they got a car? | No, I haven't. |
| Have we got a radio? | Yes, they have. |